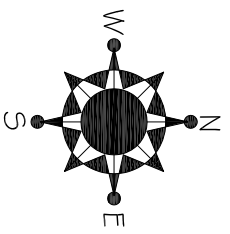
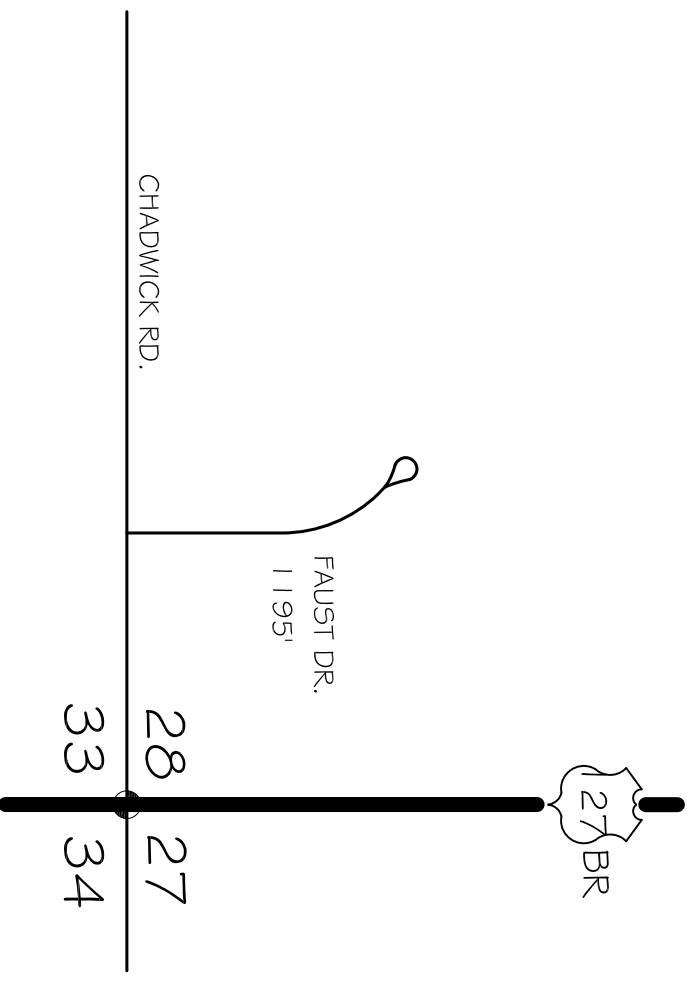


- LEGEND
- SECTION LINE
 - CORPORATE LIMITS
 - STATE TRUNKLINE
 - COUNTY PRIMARY
 - COUNTY LOCAL
 - AJACENT COUNTY
 - CITY OR VILLAGE
 - STREET

LOCAL ROAD SYSTEM TOTAL
 FEET 1,195' EQUALS 0.23 MILES



Scale 0 600 1200 FEET
 One Inch Equals 600 Ft.



TOWNSHIP OLIVE
 SECTION 28 T. 6N R. 2W
 COUNTY CLINTON
 PREPARED BY
 CLINTON COUNTY ROAD COMMISSION
FAUST DRIVE